



Park Model & Modular Cabins

Don't let lack of space limit your lifestyle!

Welcome...

What is dreamier than having your own cabin? Having your own cabin means that fun is just over the horizon for you to enjoy anytime you want! Somewhere that you can hang out to get away from stress of work, traffic and phone calls. Cabins can be a great investment too! Invest some of your extra cash in a cozy getaway home that can be rented out for extra income on weekends that you stay home.

Comfort & Charm That Everyone Loves



Our Mission:

Our goal is to build structures that will enhance the lives of those who buy them. We want to empower our employees to find fulfillment in a job well done, and to live and raise their families well. We strive to continually improve our line of structures and produce the highest quality.















Our Vision:

We want to be the producer of structures that bring people together, facilitate the making of wonderful memories, build peoples' appreciation for nature, and draw them closer to God.

Our Values:

- Integrity – Interacting with clients and employees in a way that builds trust and honesty.
- Quality – Building with high quality materials, with the highest standard of production for the best possible end product.
- Humility – Staying humble by remembering we are here to honor God.

Table of Contents...

	The Santa Rosa	pg. 4-5
	The Appalachian	pg. 6-9
	The Lake Port	pg. 10-11
	The Pine Cone	pg. 12-13
	The Riverview	pg. 14-15
	The Cape May (Blue Prints)	pg. 16-17
	Park Model Blueprints / Photo Gallery	pg. 18-19
	The Redwood Lodge	pg. 20-21
	Modular Blueprints / Photo Gallery	pg. 22-23
	Recreational 14x52	pg. 24-25
	Recreational 14x36	pg. 26-27
	Recreational 10x18	pg. 28-29
	Photo Gallery	pg. 30-31
	Options & Colors	pg. 32-35

Need a customized cabin?

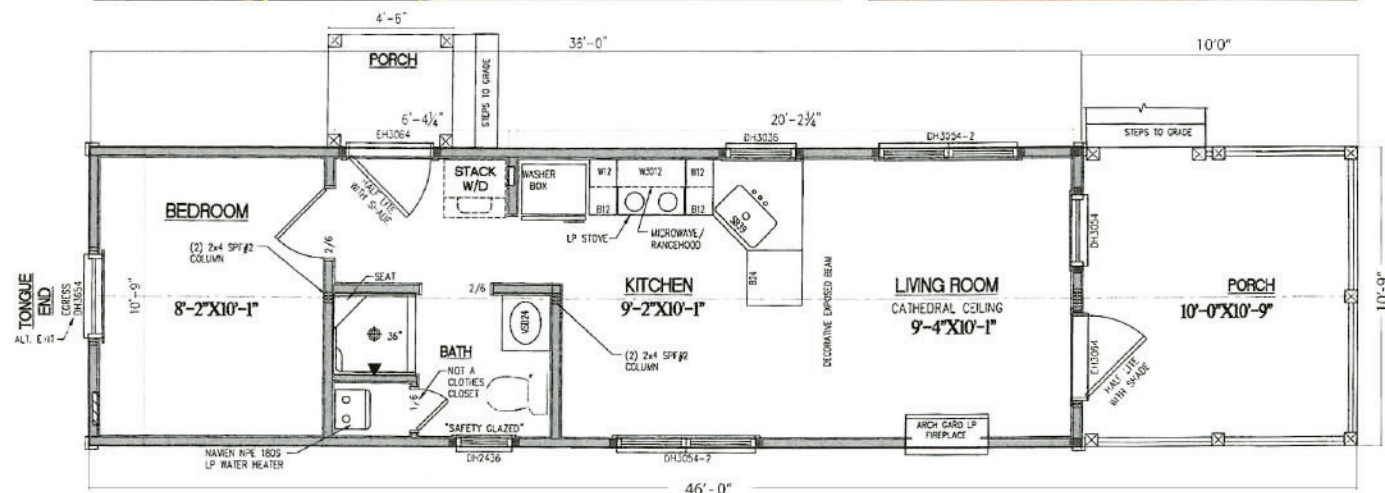
Just give us a call or send us an e-mail. We have options for placing cabins on pillars, wheels, and foundations. Pick your option of stained log or lap siding or upgrade to our metal, vinyl, or T-111 options. Interior walls and trim come standard with clear stain on knotty pine, or upgrade to white wash or weather gray stain options. Pine cabinets with clear stain come as standard, or you can ask to upgrade to maple or hickory. We also offer fully furnished cabins with appliances, beds, couches, and chairs. Ask us what our options are!





The Santa Rosa

10'9" x 46'0" PARK MODEL



The Santa Rosa



Standard Features

10" x 10'9" Porch.

- 2x4 walls with 1/2" OSB & Housewrap
- Your choice of log or LP lap siding with choice of stain (shown with red vinyl siding)
- 2x6 floor joist with 3/4" T&G flooring
- R-13 Insulation on walls
- R-19 Insulation on ceiling
- R14 Spray foam with rodent-proof on floor
- T&G knotty pine interior with clear stain (shown with white wash stain)
- Pine trim & mouldings with clear stain (shown with Heritage stain)
- Vinyl plank flooring with wood look
- Pressure treated railing stained with color of choice (shown with white vinyl railing)
- Porch Trex decking color of your choice (shown with gray decking)
- All windows are clay with prairie grids (shown with white 6-lite windows)
- Half-lite pre-hung doors (shown w/built in blinds)
- Pine kitchen cabinets with clear stain (shown with Heritage stain)
- Formica countertop with your choice of color (shown with custom counter top color)
- 24" Pine vanity with clear stain
- Electrical package includes 100 amp service with receptacles and lights per code
- 20 gallon water heater
- 36" shower unit
- Single zone mini split
- Fire extinguisher

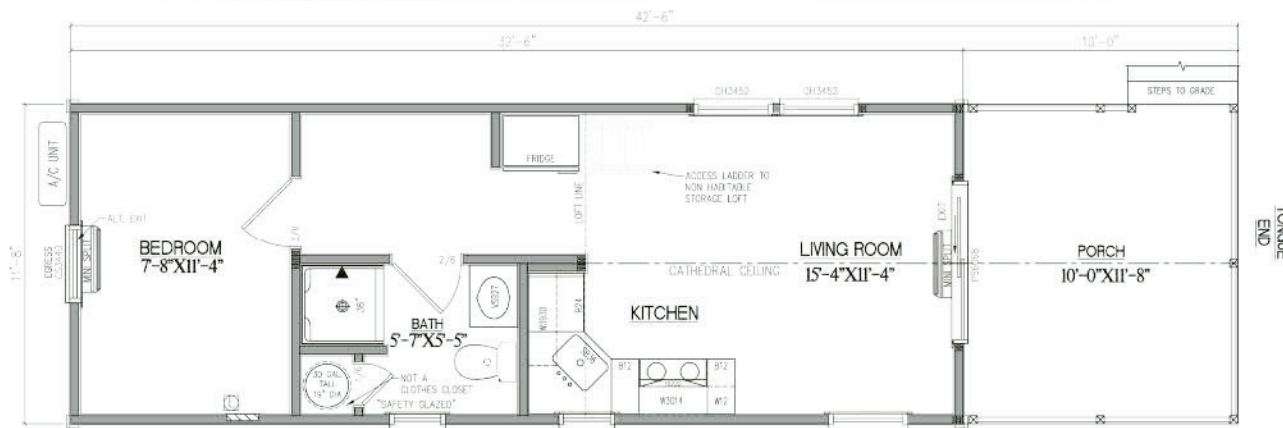
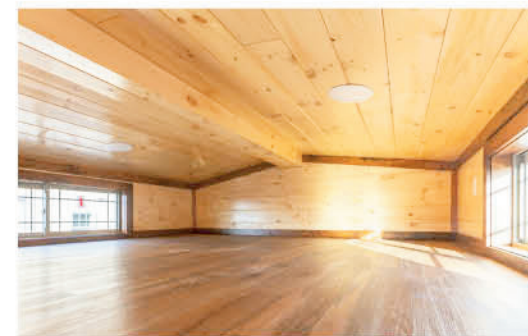
Options Available

- Range Coil top stove
- Refrigerator
- Microwave with hood



The Appalachian

11'8" x 42'6" PARK MODEL



The Appalachian



Standard Features

11'8" x 42'6" with 11'8" x 10' Porch.

- 2x4 walls with 1/2" OSB & Housewrap
- Your choice of log or LP lap siding with choice of stain (shown with chestnut brown LP Lap siding)
- 2x6 floor joist with 3/4" T&G flooring
- R-13 Insulation on walls
- R-19 Insulation on ceiling
- R14 Spray foam with rodent-proof on floor
- T&G knotty pine interior with clear stain
- Pine trim & mouldings with clear stain (shown with Heritage stain)
- Vinyl plank flooring with wood look
- Pressure treated railing stained with color of choice (shown with aluminum railings)
- Porch Trex decking color of your choice (shown with brown decking)
- All windows are clay with prairie grids
- Half-lite pre-hung doors (shown w/ Full Lite Pre-Hung Door)
- Pine kitchen cabinets with clear stain (shown with Heritage stain)
- Formica countertop with your choice of color
- 24" Pine vanity with clear stain
- Electrical package includes 100 amp service with receptacles and lights per code
- 20 gallon water heater
- 36" shower unit
- Single zone mini split
- Fire extinguisher

Options Available

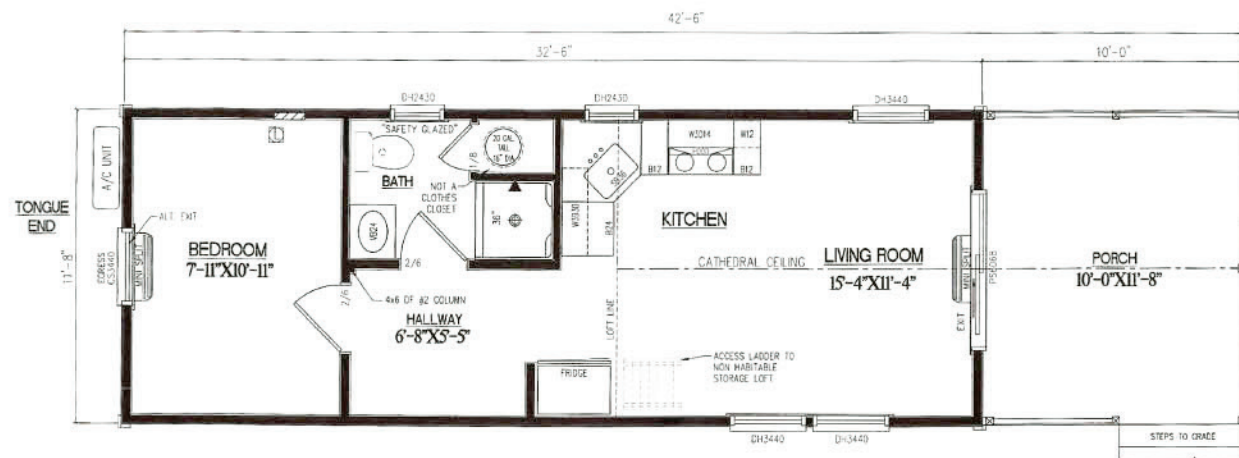
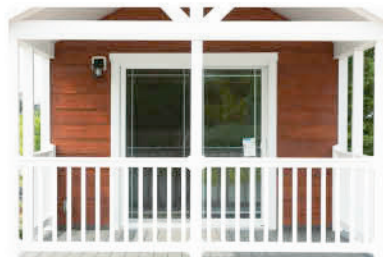
- Range Coil top stove
- Refrigerator
- Microwave with hood





The Appalachian

11'8" x 42'6" PARK MODEL



The Appalachian



Standard Features

11'8" x 42'6" with 11'8" x 10' Porch.

- 2x4 walls with 1/2" OSB & Housewrap
- Your choice of log or LP lap siding with choice of stain (shown with redwood LP Lap siding)
- 2x6 floor joist with 3/4" T&G flooring
- R-13 Insulation on walls
- R-19 Insulation on ceiling
- R14 Spray foam with rodent-proof on floor
- T&G knotty pine interior with clear stain (shown with white wash stain)
- Pine trim & mouldings with clear stain
- Vinyl plank flooring with wood look
- Pressure treated railing stained with color of choice (shown with white vinyl railings)
- Porch Trex decking color of your choice (shown with gray decking)
- All windows are clay with prairie grids (shown with white windows)
- Half-lite pre-hung doors (shown w/ Sliding Glass door)
- Pine kitchen cabinets with clear stain
- Formica countertop with your choice of color
- 24" Pine vanity with clear stain
- Electrical package includes 100 amp service with receptacles and lights per code
- 20 gallon water heater
- 36" shower unit
- Single zone mini split
- Fire extinguisher

Options Available

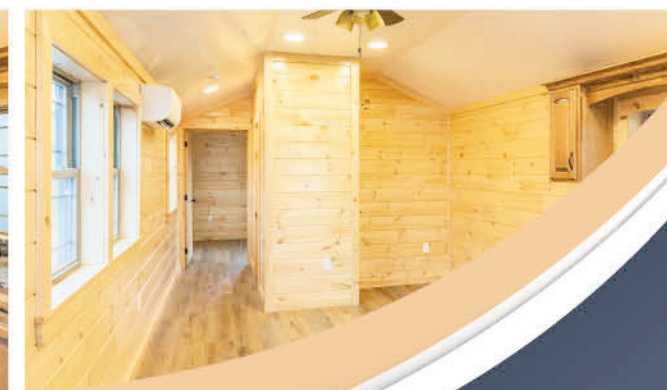
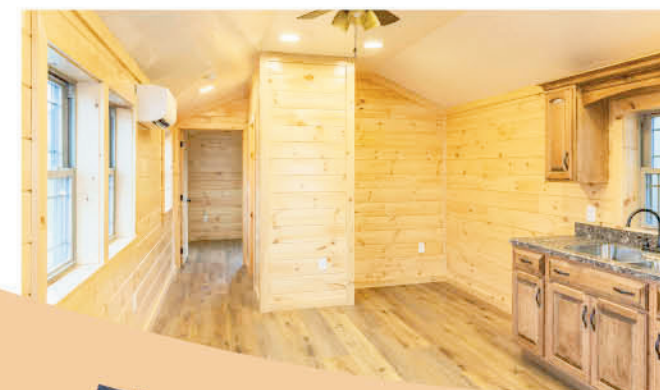
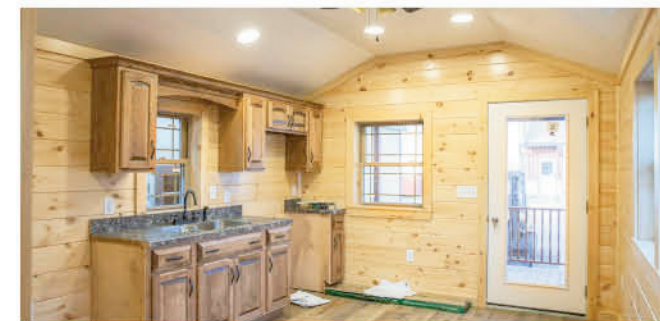
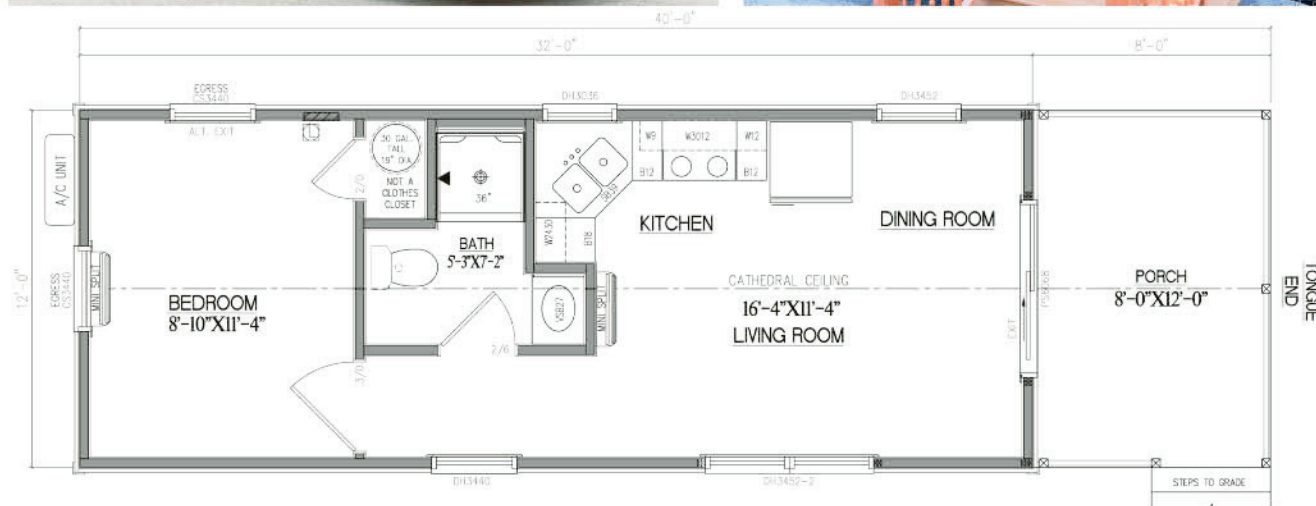
- Range Coil top stove
- Refrigerator
- Microwave with hood





The Lake Port

12'x40' with 12' x 8' Porch PARK MODEL



The Lake Port



Standard Features

12'x40' with 12' x 8' Porch.

- 2x4 walls with 1/2" OSB & Housewrap
- Your choice of log or LP lap siding with choice of stain (shown with redwood log siding)
- 2x6 floor joist with 3/4" T&G flooring
- R-13 Insulation on walls
- R-19 Insulation on ceiling
- R14 Spray foam with rodent-proof on floor
- T&G knotty pine interior with clear stain
- Pine trim & mouldings with clear stain
- Vinyl plank flooring with wood look
- Pressure treated railing stained with color of choice (shown with redwood pressure treated railing)
- Porch Trex decking color of your choice (shown with brown decking)
- All windows are clay with prairie grids
- Half-lite pre-hung doors (shown w/ Full Lite Pre-Hung Door)
- Pine kitchen cabinets with clear stain
- Formica countertop with your choice of color
- 24" Pine vanity with clear stain
- Electrical package includes 100 amp service with receptacles and lights per code
- 20 gallon water heater
- 36" shower unit
- Single zone mini split
- Fire extinguisher

Options Available

- Range Coil top stove
- Refrigerator
- Microwave with hood



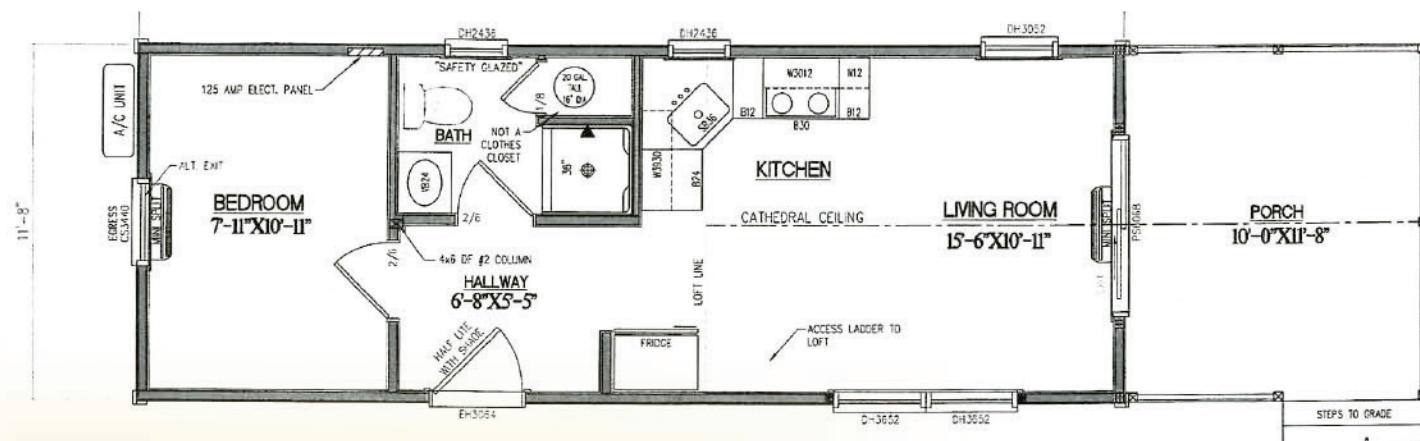


The Pine Cone



The Pine Cone

11'8" x 42'6" with 10' Porch PARK MODEL



Standard Features

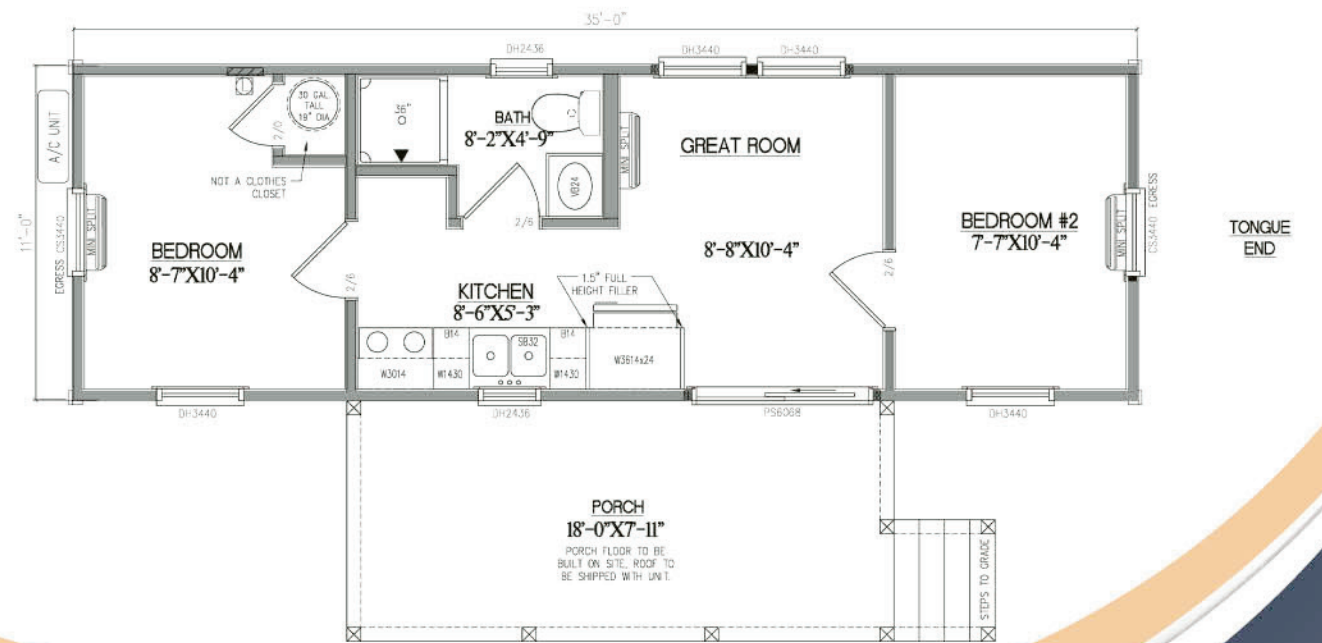
11'8" x 42'6" with 10' Porch

- 2x4 walls
- Your choice of log or LP lap siding with choice of stain (shown with chestnut brown LP Lap siding)
- 2x6 floor joist
- R-13 Insulation on walls
- R-13 Insulation on ceiling
- R14 Spray foam with rodent-proof on floor
- 1"x8" T&G knotty pine interior with clear stain
- Pressure treated railing stained with color of choice (shown with aluminum railing)
- Porch Trex decking color of your choice (shown with brown decking)
- Pine trim & mouldings with clear stain
- Vinyl plank flooring with wood look
- All windows are clay with prairie grids
- Half-lite pre-hung doors (shown w/ Sliding Glass door)
- Electrical package includes 100 amp service with receptacles and lights per code

Options Available

- Range Coil top stove
- Refrigerator
- Microwave with hood

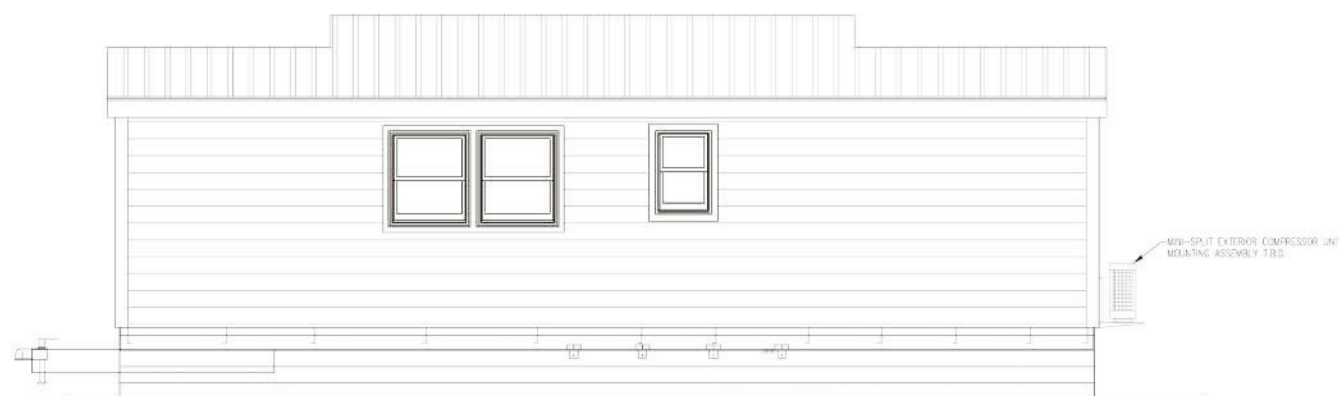




The Riverview (Rendering)

The Riverview

(Rendering) 11'x35' with 8'11"x18' porch, **PARK MODEL**



REAR ELEVATION

NOTES: THESE ELEVATIONS ARE FOR REFERENCE ONLY. THE ACTUAL SITE MAY NOT BE SETUP WITH THE PROPOSED DECKS AND STEPS AS SHOWN.



Standard Features

11x35' with 8'x18' Porch.

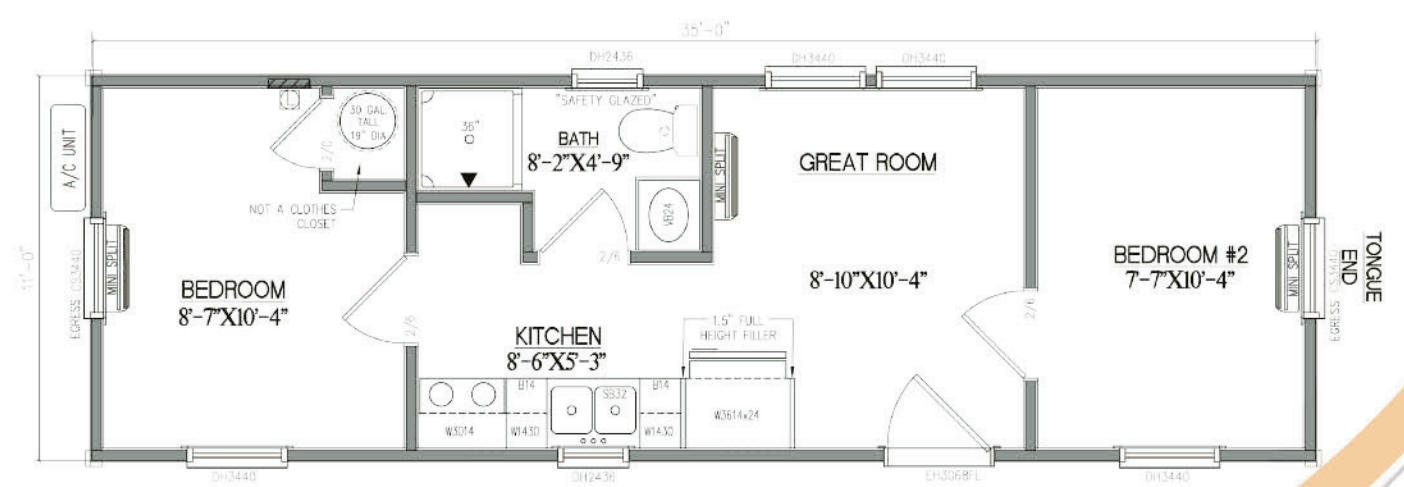
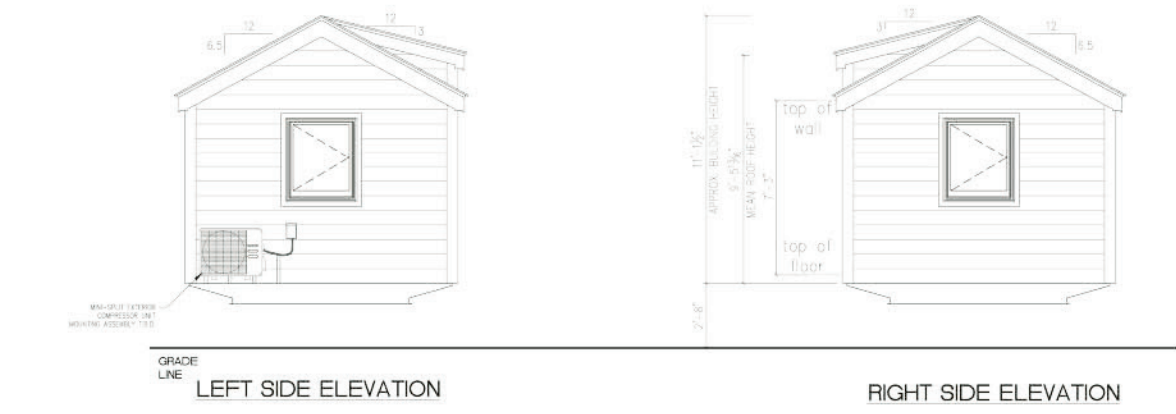
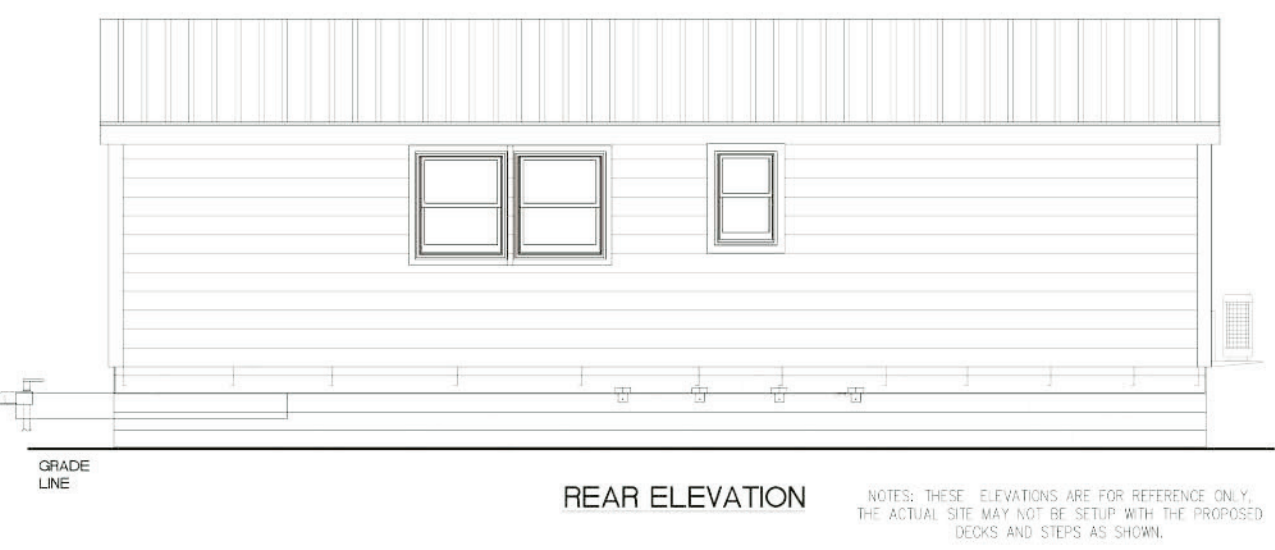
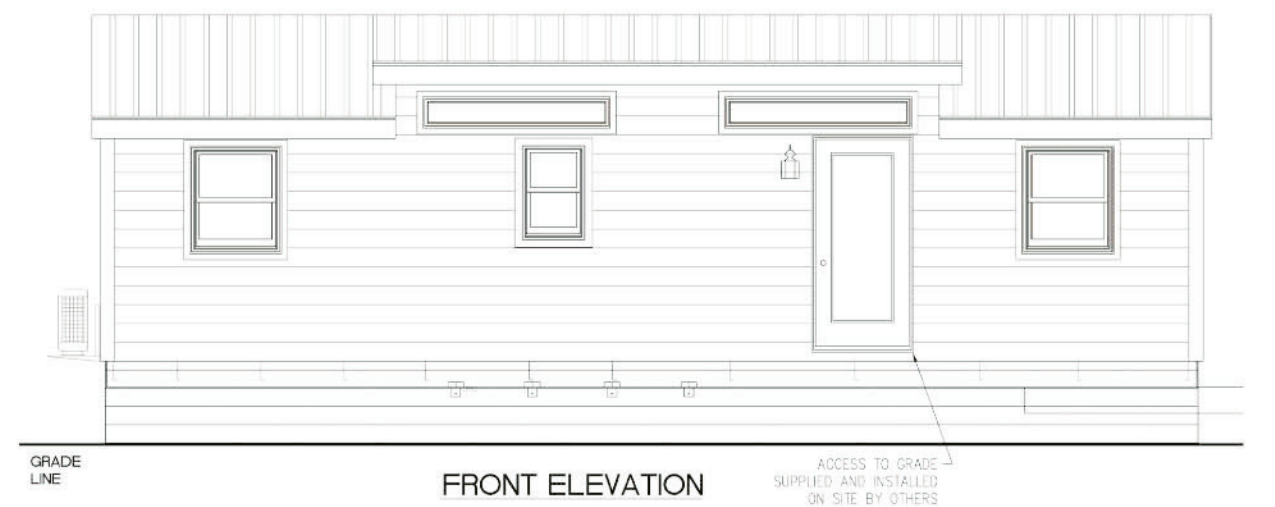
- 2x4 walls with 1/2" OSB & Housewrap
- Your choice of log or LP lap siding with choice of stain (shown with log siding)
- 2x6 floor joist with 3/4" T&G flooring
- R-13 Insulation on walls
- R-19 Insulation on ceiling
- R14 Spray foam with rodent-proof on floor
- T&G knotty pine interior with clear stain
- Pine trim & mouldings with clear stain
- Vinyl plank flooring with wood look
- Pressure treated railing stained with color of choice
- Porch Trex decking color of your choice
- All windows are clay with prairie grids
- Half-lite pre-hung doors (shown w/ Sliding Glass door)
- Pine kitchen cabinets with clear stain
- Formica countertop with your choice of color
- 24" Pine vanity with clear stain
- Electrical package includes 100 amp service with receptacles and lights per code
- 20 gallon water heater
- 36" shower unit
- Single zone mini split
- Fire extinguisher

Options Available

- Range Coil top stove
- Refrigerator
- Microwave with hood



The Cape May



The Cape May



Standard Features

11x35'

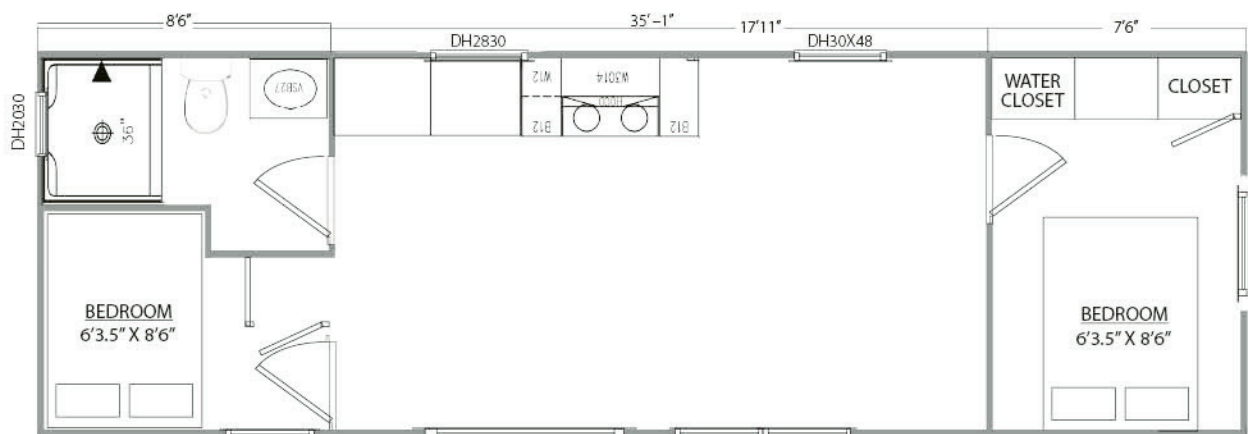
- 2x4 walls with 1/2" OSB & Housewrap
- Your choice of log or LP lap siding with choice of stain
- 2x6 floor joist with 3/4" T&G flooring
- R-13 Insulation on walls
- R-19 Insulation on ceiling
- R14 Spray foam with rodent-proof on floor
- T&G knotty pine interior with clear stain
- Pine trim & mouldings with clear stain
- Vinyl plank flooring with wood look
- All windows are clay with prairie grids
- Half-lite glass prehung door (shown w/ full-lite door)
- Pine kitchen cabinets with clear stain
- Formica countertop with your choice of color
- 24" Pine vanity with clear stain
- Electrical package includes 100 amp service with receptacles and lights per code
- 20 gallon water heater
- 36" shower unit
- Single zone mini split
- Fire extinguisher

Options Available

- Range Coil top stove
- Refrigerator
- Microwave with hood

More Park Model Drawings

The MountainSide



The MountainView

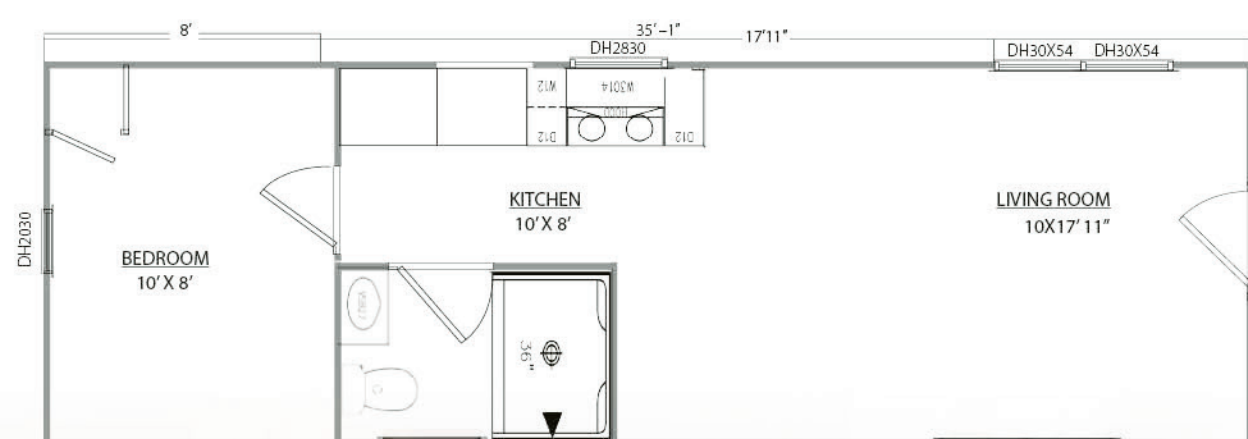
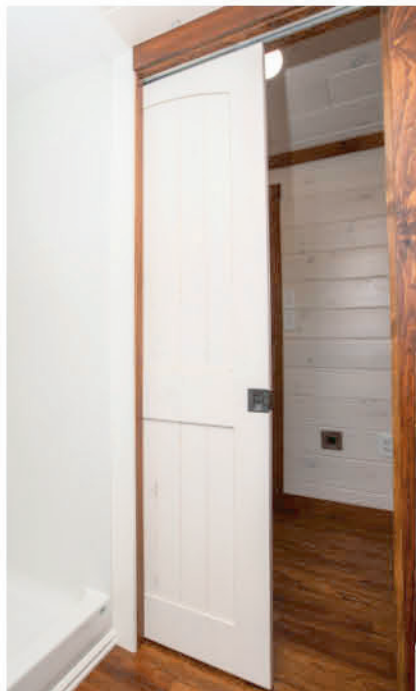


Photo Gallery

More Features to add to customize your Park Model.



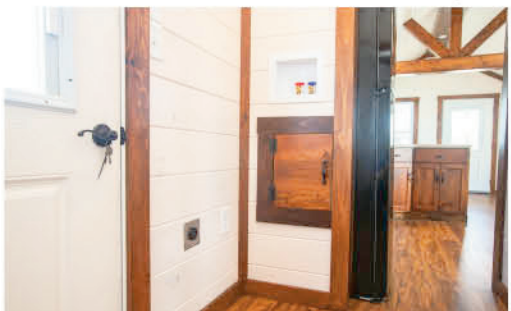
Pocket Doors



Bathroom Closet



Built In Bunk Beds in the hallway

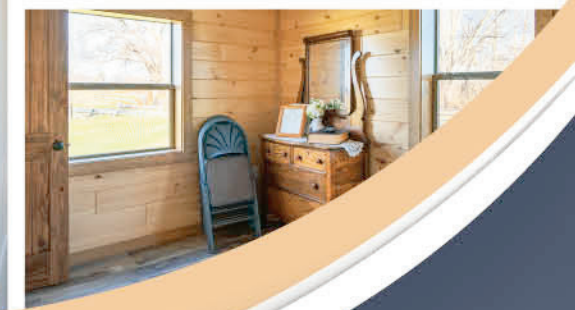
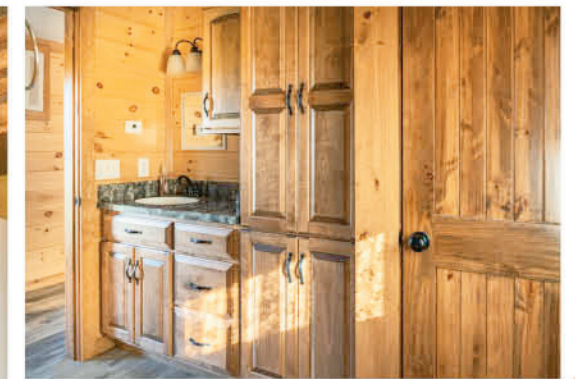


Washer & Dryer Hookup



Compact Bathroom





Redwood Lodge



Redwood Lodge

14'6" x 48'0" Modular



Standard Features

14'6" x 48' 0"

- 2x6 walls with 1/2" OSB & Housewrap
- Your choice of log or LP lap siding with choice of stain (shown with LP Lap siding w/ Teak Urethane Stain)
- 2x6 floor joist with 3/4" T&G flooring
- R-21 Insulation on walls
- R-30 Insulation on ceiling
- R-21 Spray foam with rodent-proof on floor
- T&G knotty pine interior with clear stain (shown w/ Trusscore Ceiling)
- Pine trim & mouldings with clear stain (shown w/ Provincial stain)
- Vinyl plank flooring with wood look
- Pressure treated railing stained with color of choice
- Porch Trex decking color of your choice (shown with pressure treated decking)

- Half-lite pre-hung doors (shown w/ full-lite door w/ built in blinds)
- Pine kitchen cabinets with clear stain (shown with maple cabinets w/ Provincial stain)
- Formica countertop with your choice of color
- 24" Pine vanity with clear stain
- Electrical package includes 100 amp service with receptacles and lights per code
- 20 gallon water heater (shown w/ On Demand heater)
- 36" shower unit (shown w/ 48" shower)
- Single zone mini split
- Fire extinguisher

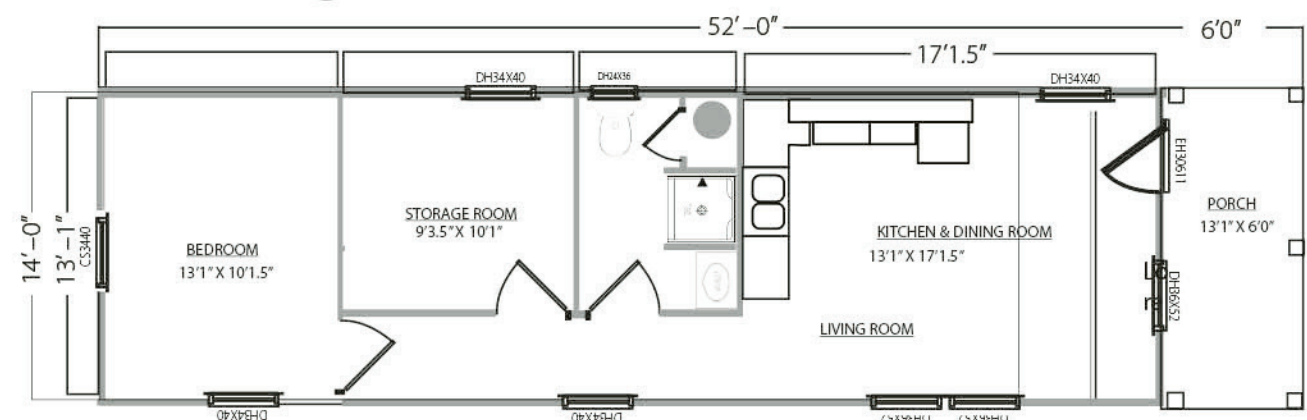
Options Available

- Range Coil top stove
- Refrigerator
- Microwave with hood
- Shown w/ Lifestyle skirting in pebble color)

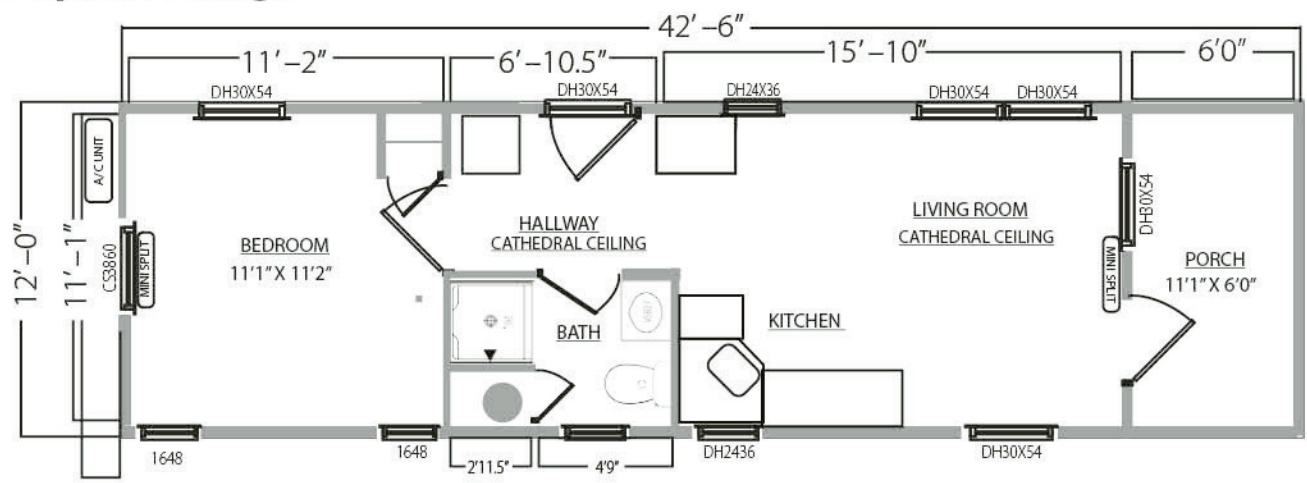


More Modular Drawings

Mountain Lodge



Alpine Lodge



Pine Ridge Lodge

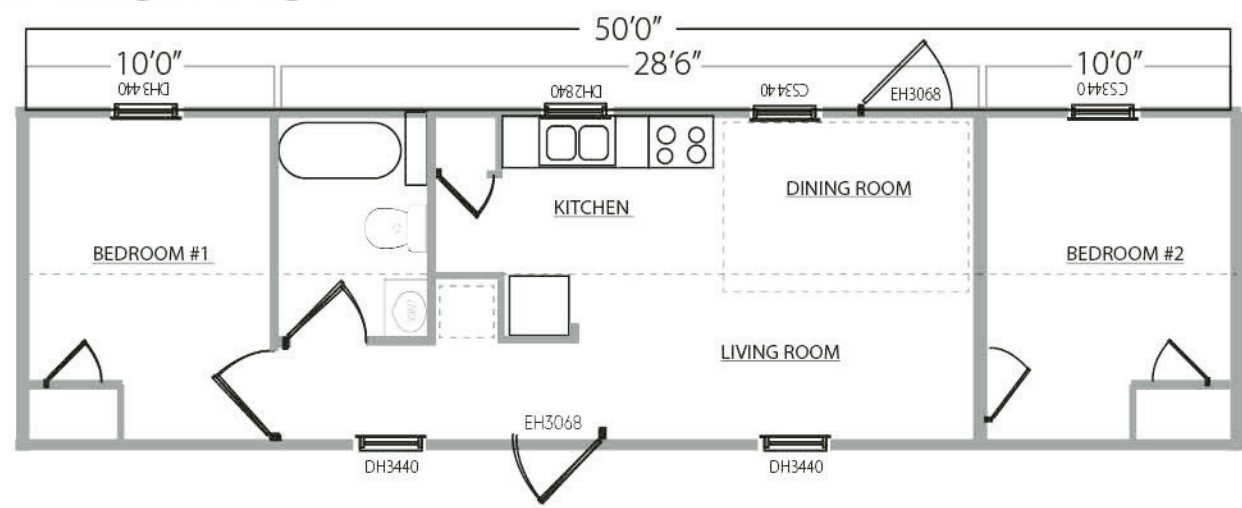


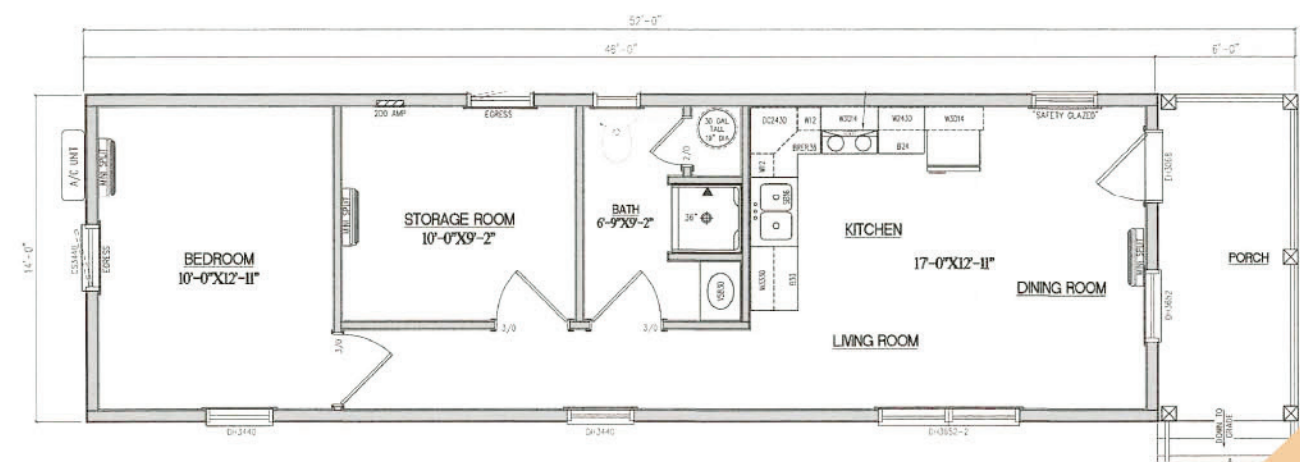
Photo Gallery



More Features to add to customize your Park Model.



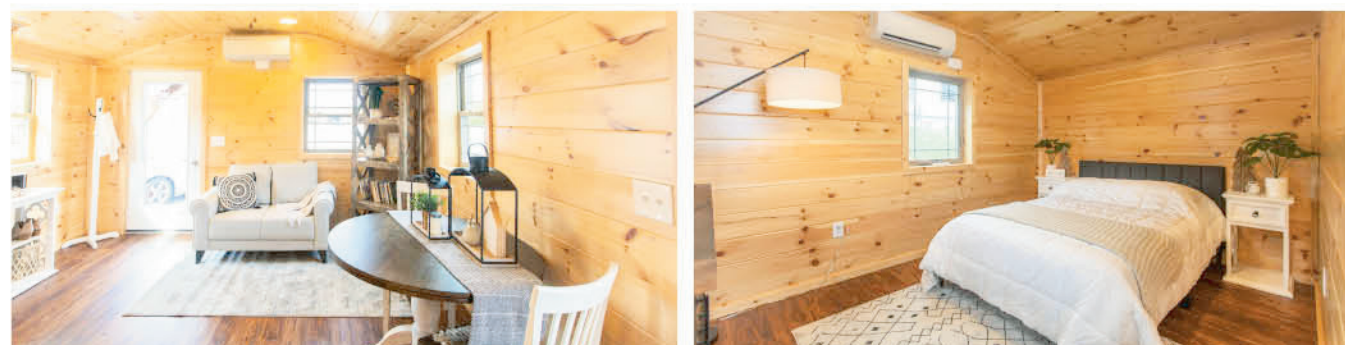
Outside Water Access Outdoor Outlet



Recreational 14x52



Recreational 14'x52'



All furniture, decor, and household goods in this cabin were a courtesy of Homeplace Furniture. Visit their store or buy online! homeplacefurniture.org

Homeplace Furniture

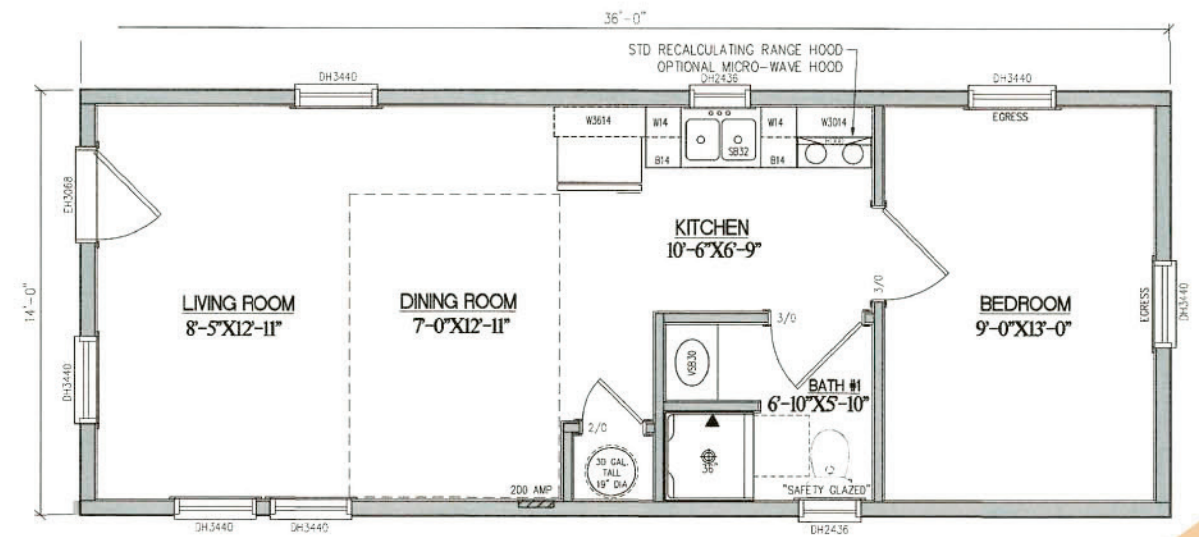
839 May Post Office Rd, Strasburg, PA 17579
(717) 947-8225

Standard Features

14' x 52'

- 2x6 walls with 1/2" OSB & Housewrap
- Your choice of log or LP lap siding with choice of stain (shown with redwood log siding)
- 2x6 floor joist with 3/4" T&G flooring
- R-19 Insulation on walls
- R-30 Insulation on ceiling
- R-21 Spray foam with rodent-proof on floor
- T&G knotty pine interior with clear stain
- Pine trim & mouldings with clear stain
- Vinyl plank flooring with wood look
- Pressure treated railing stained to your color of choice
- Porch Trex decking color of your choice
- All windows are clay with prairie grids
- Full Lite Prehung Door
- Pine kitchen cabinets with clear stain
- Formica countertop
- 27" Pine vanity with clear stain
- Electrical package includes 200 amp service with receptacles and lights per code
- 30 gallon water heater
- 36" shower unit
- Single zone mini split
- Fire extinguisher





Recreational 14x36



Recreational 14'x36'



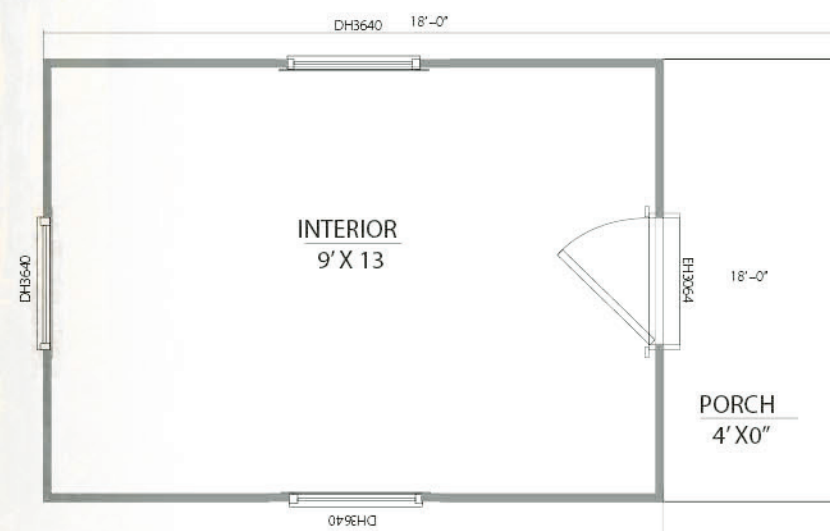
Standard Features

14' x 36'

- 2x6 walls with 1/2" OSB & Housewrap
- Your choice of log or LP lap siding with choice of stain (shown with chestnut brown LP Lap siding)
- 2x6 floor joist with 3/4" T&G flooring
- R-19 Insulation on walls
- R-30 Insulation on ceiling
- R-21 Spray foam with rodent-proof on floor
- T&G knotty pine interior with clear stain
- Pine trim & mouldings with clear stain
- Vinyl plank flooring with wood look
- All windows are clay with prairie grids
- Full Lite Prehung Door
- Pine kitchen cabinets with clear stain
- Formica countertop
- 27" Pine vanity with clear stain
- Electrical package includes 200 amp service with receptacles and lights per code
- 30 gallon water heater
- 36" shower unit
- Single zone mini split
- Fire extinguisher



Recreational 10'X18'



Recreational 10x18



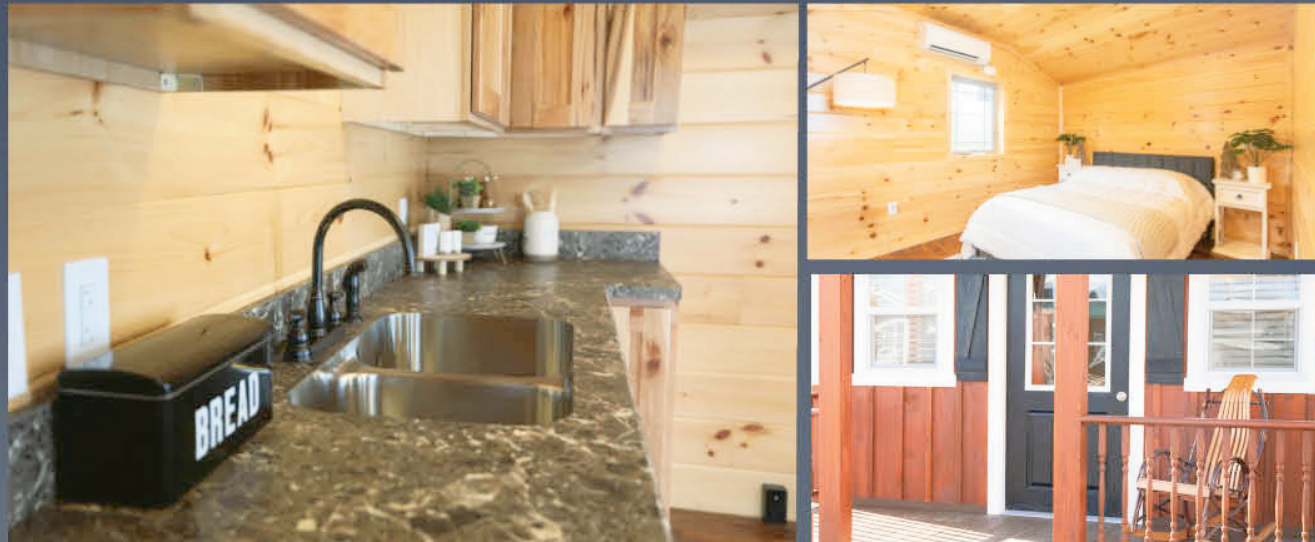
Standard Features

10'x18'

- 2x4 walls
- Your choice of log or LP lap siding with choice of stain (shown with Cedar Gray Board & Batten Metal siding)
- 2x4 floor joist
- R-13 Insulation on walls
- R-13 Insulation on ceiling
- R14 Spray foam with rodent-proof on floor
- 1"x8" T&G knotty pine interior with clear stain (shown with white wash stain)
- Pine trim & mouldings with clear stain (shown with white wash stain trim)
- Vinyl plank flooring with wood look
- All windows are clay with prairie grids
- Full-lite glass prehung door
- Electrical package includes 100 amp service with receptacles and lights per code

Photo Gallery

Features to add
to customize your cabin.



Metal Roofing & Siding



Exterior Paint Colors



Shingle Colors



Urethane Stain Colors for Exteriors
for lap siding



Urethane On Pine & Log Siding for Exteriors



Vinyl Plank Flooring options



Amber Cup-o-Java Juneau Kessner Newark Pine Raccoon Antique Pine
\$1.00 Psf upgrade



Hickory 3.25,4,5 Hickory 3.25,5 White Oak 3.25,4,5 White Oak 3.25,5

HARDWOOD UPGRADE OPTIONS



Tripleblock Turntable

Cabinet Stain Colors















Medium Cherry Stain Driftwood Stain Honey Pine Stain Heritage Stain Mocha Stain Provincial Stain Special Cherry Stain



Wormy Maple Michaels Cherry Wormy Maple Clear Finish Wormy Maple Heritage Wormy Maple Honey Pine Maple Natural Stain Rustic Hickory Provincial Stain Rustic Hickory Clear Stain Knotty Pine Clear Stain




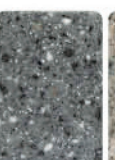








Countertop Colors

FORMICA (Standard Options)



Alicante Bourbon Pine Brecia Bronzite Calcutta Cipollino De Pasco Luna Light Marula Pine Old Mill Portoro Typhoon Ice

CORIAN (\$5.00 Lf Upcharge)



Ivory White Arctic Granite Moondust White Quartz Sea Oat Quartz Moonscape Quartz Almond Pearl Desert Sand Graphite Granite Wallowa Gray Granite White Granite

Interior Wall Colors



Knotty Pine - Clear



Knotty Pine - Whitewash



Knotty Pine - Classic Gray

Photo Gallery

More Features to add to customize your cabin.





Park Model &
Modular Cabin
Certified!

Authorized Dealer